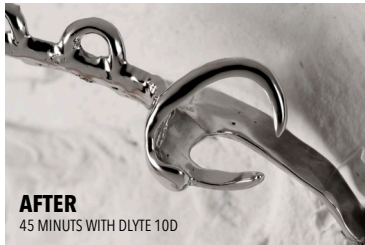




CHROME COBALT **DRYLYTE**® ELECTROPOLISHING

DryLyte® Technology

DryLyte® new patented technology for grinding and polishing metals by ion transport using free solid bodies. Revolutionary dry electropolishing that not uses any liquid as electrolyte.



1) GRINDING AND POLISHING IN ONE STEP

From cast to mirror-finishing polishing in just one step. Completely automated process.

2) BIG TIME SAVINGS

An optimal performance is achieved, due to a high energy extracting process. At same time, the whole process is carried out using the same machine, reducing the waiting and preparation time. It is even possible to process 6 pieces simultaneously.

3) POLISH COMPLEX PARTS WITHOUT DISASSEMBLING THEM

The polishing action reaches every corner of the piece, so it can process inner cavities which can not be accessed mechanically.

4) NON-CONDUCTIVE MATERIALS WILL NOT BE AFFECTED

Pieces can be processed with the resine bonded to the skeletal, which will not be affected and maintaining their original properties. The dielectric parts are unaffected by the process.

5) MAINTAINS THE GEOMETRY OF THE PIECE

The process, unlike mechanical ones, does not rounds edges, and can penetrate in all dead

zones. These attributes, along with the extraction performance, allows for the creation of new designs, which would not have been feasible until now.

6) LOW LOSS RATE

The process achieves the highest polishing quality with minimal removal of material.

7) EXPERTISE IS NOT REQUIRED

The process, being fully automated, does not require any specialized labor. It also enables the industrialization of pieces by removing the differences between them.

8) LOW MAINTENANCE AND CONSUMABLES COSTS

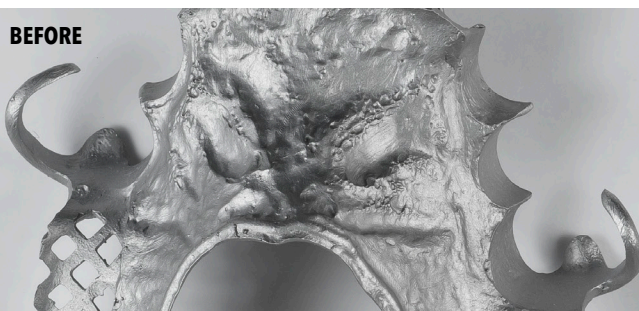
The treatment process does not require any abrasive items, which prevents a constant expenditure on consumables.

9) ENVIRONMENTALLY FRIENDLY

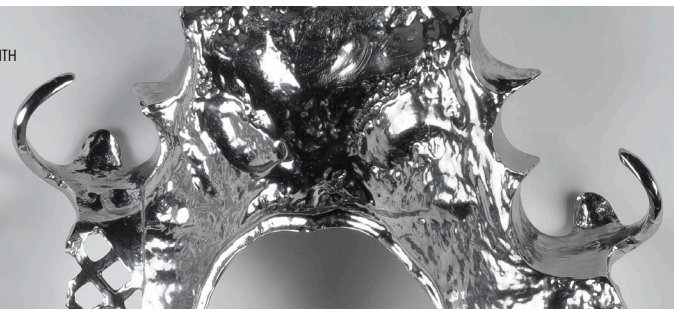
No environmentally harmful materials are used during the polishing process.



Non-conductive materials will not be affected



AFTER
30 MINUTS WITH
DLYTE 10D



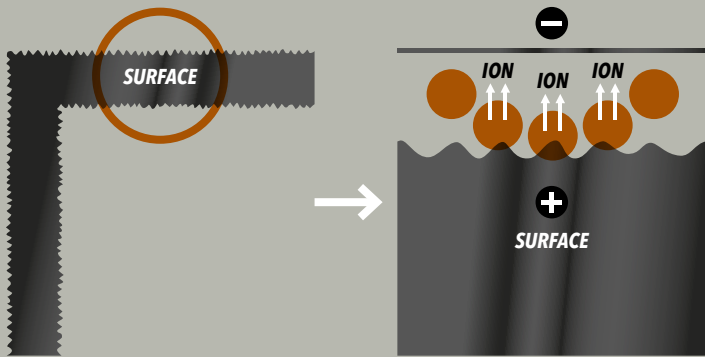


Result after current
Mechanical-Manual Polishing



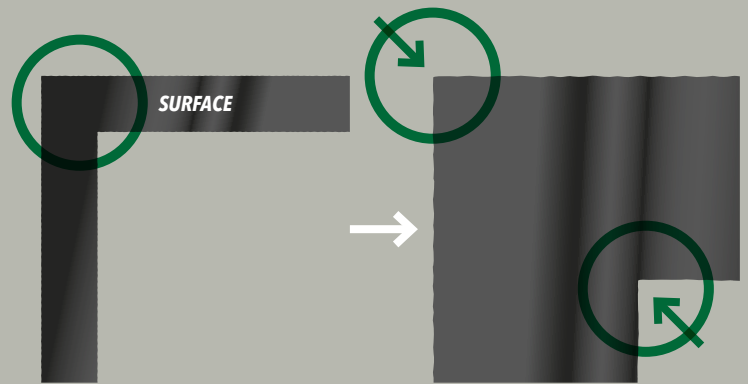
Result after
DLyte® Dental System

CHROME COBALT **DRYLYTE**® ELECTROPOLISHING



BEFORE

The process removes material only
from the peaks of roughness.



AFTER

The process not round edges and
can penetrate in all dead zones.

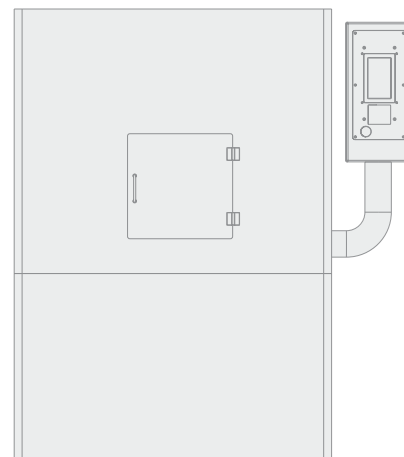


Result after current
Mechanical-Manual
Polishing + Classical
Electropolishing



Result after
DLyte® Dental System

DLyte Dental Series

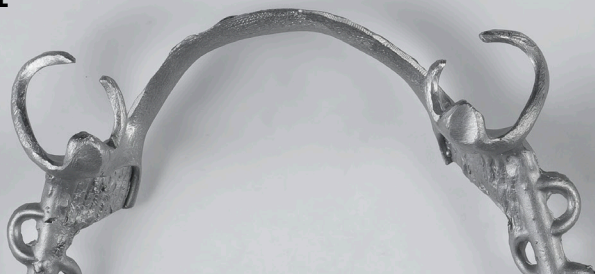


MODEL	DLYTE 10D*	DLYTE 100D*	DLYTE 1000D
CAPACITY	3 piece	9 pieces	36 pieces
DIMENSIONS	770 x 480 x 1050 mm	850 x 540 x 1200 mm	-
WHEIGHT	100 kg	120 kg	-
POWER	1,4 kW	1,4 kW	-
VOLTAGE	110-220 V	110-220 V	-
AIR PRESSURE	4-5 bar	4-5 bar	GPA002500
ELECTROLYTE	GPA002400	GPA002500	



*Available DLyte 10D and 100D for 3 and 9 pieces for cycle

BEFORE



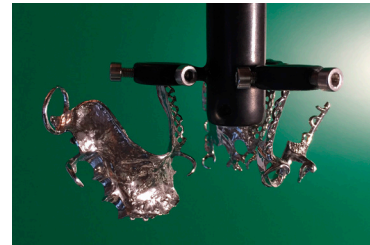
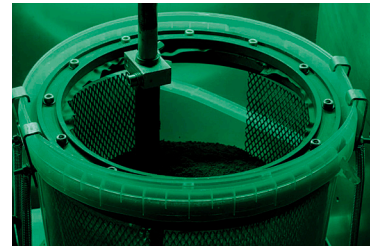
AFTER
30 MINUTS WITH
DLYTE 10D



DLyte 10D



DLyte10D® new patented machine for grinding and polishing stainless-steel and chrome cobalt alloys for dental industry. Available for all types of dental skeletal, spacers, implants and orthodontics brackets. Capacity of 3 pieces for each working cycle with an average of 30 minutes time cycle from previous sandblasting procedure (in case of skeletal).



BEFORE



AFTER
40 MINUTS WITH
DLYTE 100D





Machine patented and manufactured by

GPAINNOVA
The wonder of making headway



The use of Patented DryLyte Technology
is a concession approved by DryLyte Company



European Union
European Regional
Development Fund
"A way to build Europe"

Made in Barcelona

www.dlyte.es